

# Masport®



*an aussie lifestyle*

barbecue range 2019/20



# Outdoor Living



With over 109 years of innovation, Masport has grown to become a market leader for outdoor garden and lifestyle products. Synonymous with quality and reliability the brand has been trusted by Aussies for generations. This ongoing success means Masport is sold in over 45 countries worldwide and continues to research and develop outstanding products.

Regardless of whether you want a barbecue to be the centrepiece of your outdoor entertaining area or you simply need something to sizzle up the steak and sausages at the flat or holiday home, Masport has the right model to suit your needs, lifestyle and budget. All barbecues in Masport's extensive range boast an array of additional features designed to make the most of your outdoor cooking skills.

So be part of the great Aussie way of life this summer with a Masport barbecue.

# Barbecue Features



## 4 BURNERS

Four stainless steel main burners provide power and even heat distribution over the cooking surface.



## 6 BURNERS

Six stainless steel main burners improve heat distribution over full cooking surfaces.



## SIDE-BURNER

Side burner provides a hob type option when required.



## TEMPERATURE GAUGE

Temperature gauge keeps you in control when pre heating and roasting.



## HOOD WINDOW

The safety approved glass window is integrated into the hood allowing a full view inside the barbecue without having to open, maintaining heat integrity.



## BARBECUE COVER

Comes with UV resistant Oxford cover.



## ROTISSERIE

The rotisserie can use direct heat off the rear infrared burner and indirect heat from the main burners for even roasting.



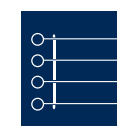
## INTERCHANGEABLE COOKING SYSTEM

Unique to Masport, the Interchangeable Insert Cooking System extends your cooking options with a pizza stone, kebab racks & skewers, and grill & hotplate inserts.



## FAT AWAY DRAINAGE SYSTEM

Unique to Masport, the Fat Away Drainage System (FADS) helps to efficiently direct away excess fats, oils and unnecessary juices along specially designed channels and into a collection cup.



## KEBAB RACKS & SKEWERS

Stainless steel kebab racks and skewers provide an easy way to turn food on the grill without sticking.



## 304 STAINLESS STEEL

304 stainless steel provides a modern and stylish finish with extra protection against the elements.



## TIMER

Cooking timer allows you to set your desired time and the alarm reminds you when time is up.



## LED DASH AND GRILL LIGHTS

Whether it's on the control knobs or the dash, the bright LEDs will improve visibility in a very stylish way.



## SMOKER TRAY

Smoking is a very popular option when roasting or dedicated hot smoking. The integrated smoker tray is easy to prepare and runs off the barbecue burners.



## USB PORT

USB ports allow your gadgets to be charged or powered up whilst using the barbecue. Especially useful if running cooking probes and other accessories requiring power.



## REAR BURNER

Rear infrared burners are great for direct radiant heat with rotisseries but are also useful for grilling and browning off barbecue food.



## NATURAL GAS CONVERSION

A natural gas conversion kit is available to run your barbecue from mains natural gas.



## WOK BURNER

Wok style of burner provides versatility.

\* The above features are available on selected barbecues only



# Entertainment Series

Masport brings you this impressive range of Entertainment barbecues, where 304 stainless steel is blended fashionably with combinations of vitreous enamel and durable powder coat processes. 304 stainless steel is an austenitic steel with higher levels of nickel and chromium, which means superior corrosion resistance.



## Super Grande RBW SII\*

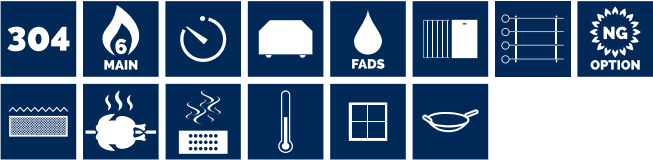
*\*Limited stock, get yours while stocks last!*  
*A great looking barbecue constructed in 304 stainless steel. A rear infrared burner is fitted for direct cooking. This barbecue also features an extra-large glass window and twin grill lights for a clear look inside reducing the temptation to have that sneaky look.*



552933

### Specifications

- 304 stainless steel for extra protection against the elements
- 6 premium 304 stainless steel burners with stainless steel flame tamers improve heat distribution over full cooking surfaces
- Double lined roasting hood with large viewing window
- Integrated smoker adds flavours into roasting or use just as a smoker
- Under hood grill lights allow you to check your barbecue cooking in poor light conditions
- Wok burner and infrared rear burner provides versatility
- Slide out stainless steel drawer for additional storage
- Stainless steel kebab racks and skewers included
- Fat Away Drainage System (FADS) on hotplate, directs away excess fats, oils and unnecessary juices
- Rotisserie kit, UV cover and an integrated bottle opener included
- Zinc alloy control knobs
- Roasting/warming rack provides additional room for cooking or keeping cooked food warm
- Timer provides a friendly reminder so you don't overcook your food
- High gloss vitreous enamel coated cookware is rust resistant and easy to clean
- Large W 480mm x D 400mm cast iron deep dish included
- 5 Year vitreous enamel grill body warranty



Natural gas conversion kit: 548979

## Supreme Plus RBW SII

*This barbecue is not short on good looks, offering die cast alloy hood ends and stylish 304 grade stainless steel. The Supreme Plus is packed with innovative and extremely useful features that are sure to bring out the creative chef in all of us.*



552965

### Specifications

- 304 stainless steel hood, doors and fascia panel
- 6 premium 304-grade stainless steel burners with flame tamers
- Double lined roasting hood with newly designed larger viewing window hood, ideal for roasting
- Integrated smoker adds flavours into roasting or use just as a smoker
- Under hood grill lights allow you to check your barbecue cooking in poor light conditions
- Side burner and infrared rear burner provides versatility
- Slide out stainless steel drawer for additional storage
- Stainless steel kebab racks and skewers included
- Fat Away Drainage System (FADS) on hotplate, directs away excess fats, oils and unnecessary juices.
- Rotisserie kit, UV cover and an integrated bottle opener included
- USB port allows your devices to be charged up or powered up whilst using the barbecue
- Roasting/warming rack provides additional room for cooking or keeping cooked food warm
- Timer provides a friendly reminder so you don't overcook your food
- High gloss vitreous enamel coated cookware is rust resistant and easier to clean
- 5 Year grill body warranty



Natural gas conversion kit: 548979



Supreme W SII

This barbecue will provide you with a six burner set up finished in a classy black finish with vitreous enamel hood and grill body. It features an extra large viewing window and is finished off with a 304 stainless steel front dash.



552972

Specifications

- Double lined roasting hood with large viewing window
- 6 premium 304 grade stainless steel burners with flame tamers
- Side burner provides versatility
- Stainless steel kebab racks and skewers included
- Fat Away Drainage System (FADS) on hotplate, directs away excess fats, oils and unnecessary juices.
- Comes with UV protected cover
- Roasting/warming rack provides additional room for cooking or keeping cooked food warm
- High gloss vitreous enamel coated cookware is rust resistant and easier to clean
- 5 Year grill body warranty



Natural gas conversion kit: 548979

Elite W

Create mouth watering meals with this well appointed yet affordable barbecue featuring large viewing window, kebab racks & skewers and the beneficial Fat Away Drainage System (FADS) for healthy barbecuing.



552982

Specifications

- Durable black vitreous enamel hood with window and double lined to aid heat retention
- 4 premium 304 grade stainless steel burners with flame tamers
- Side burner provides versatility
- Fat Away Drainage system (FADS) on hotplate, directs away excess fats, oils and unnecessary juices
- Comes with UV protected cover
- Roasting/warming rack provides additional room for cooking or keeping cooked food warm
- High gloss vitreous enamel coated cookware is rust resistant and easier to clean
- Stainless steel kebab racks and skewers included
- 5 Year grill body warranty



Natural gas conversion kit: 548754





# MB

## Contemporary

Modern looking barbecues that are not only designed to enhance your outdoor area but to entertain and create masterful feasts for family and friends. These barbecues are compact, reliable and look great.



### Classic Four

A great looking 4 burner barbecue finished in stylish gloss piano black with an attractive stainless steel trim.



553051

#### Specifications

- 4 premium 304 grade stainless steel burners
- Space saving roll back hood aids roasting and heat retention
- Removable chopping board and 100mm stainless steel bin
- Reliable integrated ignition
- Temperature gauge for controlled cooking
- Vitreous enamel cast iron grill and hotplate
- Vitreous enamel grill body
- Full twin door cabinet for storage
- High gloss finish with stainless steel trim
- Side burner provides versatile cooking options
- Roasting rack provides additional room and allows food to cook with all round heat
- Comes with an integrated bottle opener
- 5 year grill body warranty



### S/S 4

High quality 304 stainless steel constructed barbecue. A good size to entertain for small or large groups. Will provide many years of reliable service.



552924

#### Specifications

- 304 stainless steel
- 4 premium 304 grade stainless steel burners
- Space saving roll-back hood aids roasting and heat retention
- Reliable integrated ignition
- Temperature gauge for controlled cooking
- Vitreous enamel cast iron grill and hotplate
- Vitreous enamel grill body
- Full twin door cabinet for storage
- Side burner provides a versatile cooking option
- Double lined hood with window
- LED lights on all control knobs
- Roasting rack provides additional room and allows food to cook with all-round heat
- Comes with UV resistant cover
- 5 year grill body warranty





MB4000 Red

*This great looking barbecue will impress in any outdoor entertaining area. Finished in sophisticated high gloss colours with premium stainless-steel fascia and trim. It's an outdoor dining must-have!*



552975

Specifications

- 4 premium 304 grade stainless steel burners.
- Space saving roll-back hood aids roasting and heat retention.
- Removable chopping board and 100mm stainless steel bin.
- Reliable integrated ignition.
- Temperature gauge for controlled cooking.
- Vitreous enamel cast iron grill and hotplate.
- Vitreous enamel grill body.
- Full twin door cabinet for storage.
- High gloss finish with stainless steel trim and fascia.
- Side burner provides a versatile cooking option.
- Double lined hood with window.
- Roasting rack provides additional room and allows food to cook with all-round heat.
- Comes with an integrated bottle opener.
- 5 Year grill body warranty



MB6000 Red

*Power and style in one attractive well featured barbecue, perfect for the outdoor chef. A contemporary high gloss finish is combined with the high grade stainless steel fascia and trim. Premium control knobs illuminate blue when switched on for optimal night-time grilling.*



552973

Specifications

- 6 premium 304 grade stainless steel burners
- Space saving roll-back hood aids roasting and heat retention
- Removable chopping board and 100mm stainless steel bin
- Reliable integrated ignition
- Temperature gauge for controlled cooking
- Vitreous enamel cast iron grill and hotplate
- Vitreous enamel grill body
- Full twin door cabinet for storage
- High gloss finish with stainless steel trim and fascia
- Side and rear burners provide versatile cooking options
- Double lined hood with window
- LED lights on all control knobs
- Roasting rack provides additional room and allows food to cook with all-round heat
- Comes with UV resistant cover and an integrated bottle opener
- 5 Year grill body warranty



Tasman 6

*Create mouth watering masterpieces for friends and family with the Tasman 6. This stylish BBQ, finished in classic black, is equipped with six stainless steel burners and a versatile side burner that provide cooking performance beyond its value.*



553100

Specifications

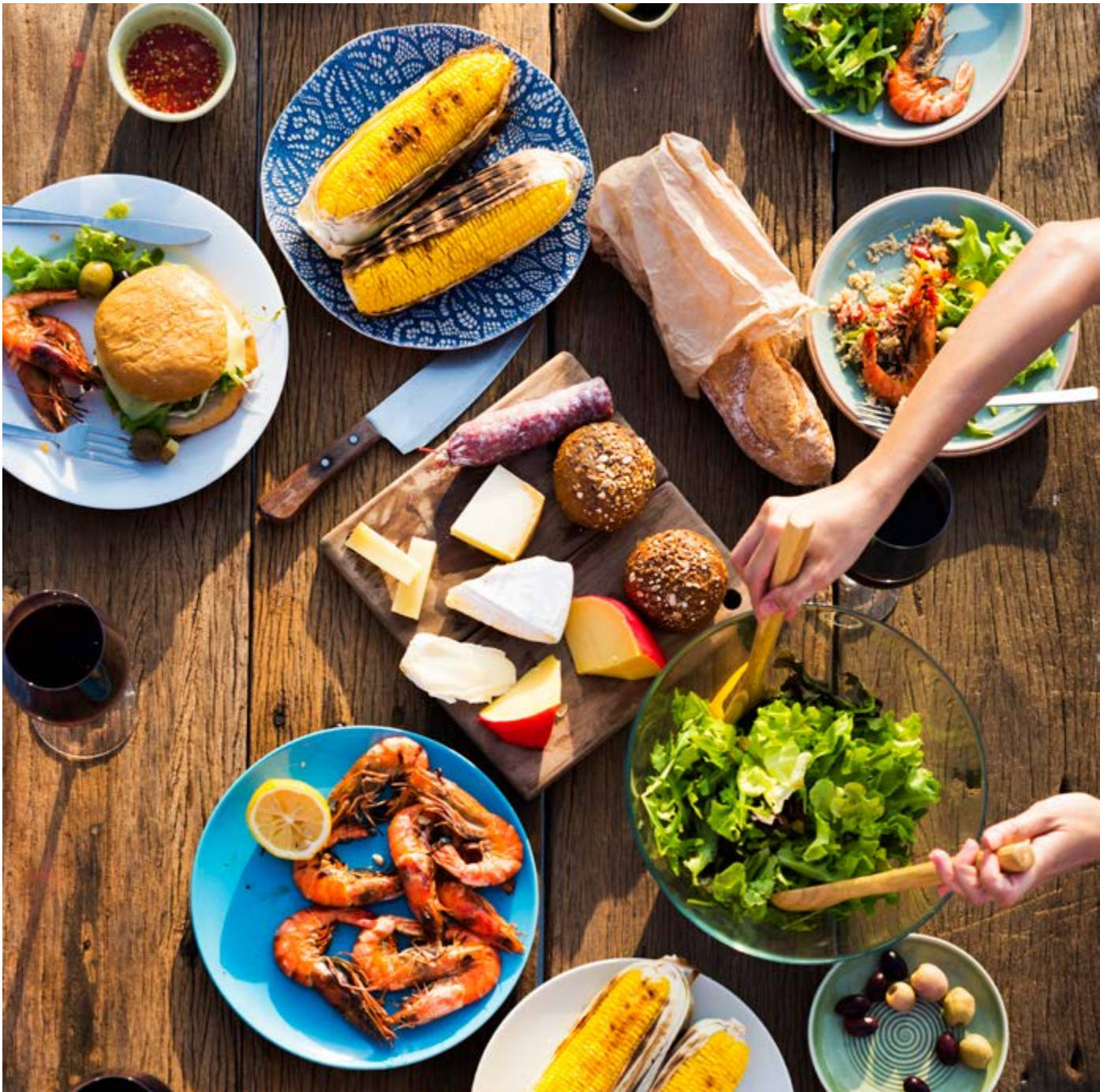
- 6 stainless steel burners
- Versatile side burner
- Integrated flame thrower ignition - for quick and easy lighting of your BBQ
- Space saving, double lined powdercoated rollback full window hood, assists with roasting and heat retention
- Vitreous enamel grill body
- 50/50 vitreous enamel cast iron hotplate and grill
- Roasting rack provides additional room and allows food to cook with all-round heat
- Temperature gauge for controlled cooking
- Soft close cabinet doors
- 4 castor wheels (2 lockable) allow for easy repositioning
- Cooking dimensions - 800mm x 440mm
- 5 Year grill body warranty





# AMBASSADOR Series

The Ambassador series adds sophistication and style to your outdoor entertaining area. Offering the ultimate in flexibility, with a high quality grill and range of modules to build your dream outdoor kitchen. The Ambassador series is the perfect way to enjoy quality home cooked meals.



553050

## Ambassador Kitchen Stone Top

The Ambassador outdoor kitchen includes a sophisticated grill finished in high grade stainless steel with a generous cooking surface and abundant storage. Perfectly complemented by the coordinating stone top Twin Fridge and Sink Modules included. The Ambassador Kitchen is the perfect way to enjoy quality home cooked meals. Offering the ultimate in flexibility, the BBQ can have all other Masport Ambassador kitchen stone top modules added to build your dream outdoor kitchen.



Natural gas conversion kit: 547548

### Specifications

- Premium 304 stainless steel Grill
- 6 premium 304 grade stainless steel burners with stainless steel flame diffusers
- Under hood grill lights allow you to check your BBQ cooking in poor light conditions
- Brass wok burner and infrared rear burner provide versatility
- Stainless steel grills and solid vitreous enamel cooking plate
- Fold down side trays which can be removed and fitted to modules if required
- AC 240v stainless steel rotisserie kit
- Oxford fabric cover (available for grill only)
- Castors with adjustable levellers.
- LED dash lights improve visibility in poor light
- Natural gas ready with jets pre-assembled
- The Ambassador Grill is equipped with a rotisserie kit, warming rack, folding side tables, UV protective cover and generous roller storage drawers
- 10 Year grill body warranty



Ambassador Kitchen full stainless steel option: 553102





553101

## Ambassador Grill

*This 304 stainless steel constructed Ambassador Kitchen Grill provides the perfect grilling solution with stainless steel grills and an enamel cast iron cooking plate.*

### Specifications

- Premium 304 stainless steel Grill
- 6 premium 304 grade stainless steel burners with stainless steel flame diffusers
- Under hood grill lights allow you to check your BBQ cooking in poor light conditions
- Wok burner and infrared rear burner provide versatility
- Stainless steel grills and solid cast iron vitreous enamel cooking plate
- Fold down side trays which can be removed and fitted to modules if required
- AC 240v stainless steel rotisserie kit
- Oxford fabric cover (available for grill only)
- Castors with adjustable levellers
- LED dash lights improve visibility in poor light
- Natural gas ready with jets pre-assembled
- The Ambassador Grill is equipped with a rotisserie kit, warming rack, folding side tables, UV protective cover and generous roller storage drawers
- Dimensions: Width = 1480mm x Depth = 600mm x Height = 900mm (body) + 300mm (hood) = Total 1200mm x Side Table Width (each) = 400mm
- 10 Year grill body warranty



Natural gas conversion kit: 547548





## Ambassador Twin Fridge Module Stone Top

Keeping drinks cool for longer even when outdoors is easy, thanks to the Masport Ambassador Twin Fridge Module.

Ambassador Twin Fridge Module stainless steel option: 552868



553042

### Specifications

- Finished in 304 stainless steel with an elegant white stone top
- The Masport Ambassador Twin Fridge Module has two independent fridge units with separate thermostats for improved cooling performance
- Outdoor certified, this twin fridge module has a 304 stainless steel finish for enhanced durability
- Self closing double glazed glass doors with background blue LED light
- Castors with adjustable levellers
- Dimensions: Width = 960mm x Depth = 580mm x Height = 900mm



stone top detail

## Ambassador Storage Module Stone Top

Take your outdoor experience to the next level with the Masport Ambassador Storage Module. Allowing you to bring your kitchen to the backyard, this storage module is perfect for storing all your cooking essentials.

Ambassador Storage Module stainless steel option: 552962



553040

### Specifications

- The Masport Ambassador Storage Module boasts a quality 304 grade stainless steel construction with a white stone top not only making it elegant but also durable and tough
- Stainless steel adjustable shelves
- Castors with adjustable levellers
- Recessed door handle
- Dimensions: Width = 830mm x Depth = 580mm x Height = 900mm



stone top detail

## Ambassador Sink Module Stone Top

Made from tough 304 stainless steel with an elegant white stone top, the Masport Ambassador Sink and Bench Module is a great addition to your outdoor kitchen setup.

Ambassador Sink Module stainless steel option: 552752



553045

### Specifications

- Finished in 304 stainless steel with an elegant white stone top
- Stainless steel sink with chrome cold tap, plug and waste
- Castors with adjustable levellers
- The Masport Ambassador sink and bench module's bench space lets you place dishes within easy reach while washing them
- For convenient water management, the sink includes a drainpipe
- Equipped with 4 adjustable castor wheels, this Masport Ambassador module is easy to re-position
- The module's faucet is for cold water only
- Dimensions: Width = 830mm x Depth = 580mm x Height = 900mm



stone top detail

## Ambassador Corner Module Stone Top

Add the Masport Ambassador Corner Module to your alfresco kitchen setup to maximise the space available for kitchenware and other items.

Ambassador Corner Module stainless steel option: 552753



553044

### Specifications

- Finished in 304 stainless steel with an elegant white stone top
- Used for changing the layout of kitchen
- 304 stainless steel constructed Outdoor Corner Module to match the Ambassador Kitchen Grill
- Made from durable 304 stainless steel, the Masport Ambassador Corner Module is suitable for use in alfresco areas
- The module's 90-degree corner design lets it seamlessly bring 2 different Ambassador kitchen modules (sold separately) together into a single space
- Dimensions: Width = 630mm x Depth = 630mm x Height = 900mm



stone top detail



# Inbuilt Series

Want something that can handle the serious entertainer that you are? Constructed from high quality 304 stainless steel and boasting a range of features, Masport's inbuilt range won't let you down.



## Ambassador Deluxe Inbuilt

The Ambassador Deluxe IB is our larger flagship inbuilt BBQ. Constructed from premium 304 stainless steel with heavy duty main burners and a versatile rear burner. Together with its clean and slick lines it offers both aesthetic design and functionality all in one



552928

### Specifications

- 6 premium 304 stainless steel burners with stainless steel flame tamers improve heat distribution over full cooking surfaces.
- Wok burner and infrared rear burner provides versatility
- Sleek premium stainless steel hood with a window, double lined to aid heat retention
- 30/70 vitreous cast iron hotplate and stainless steel grill
- Temperature gauge for controlled cooking
- Comes with UV resistant cover
- Rotisserie kit included
- Roasting/warming rack provides additional room for cooking or keeping cooked food warm.
- Rear infrared burner perfect for radiant rotisserie cooking
- Natural gas conversion available
- Reliable integrated ignition.
- Stainless steel grill body is easy to clean and maintain
- 10 year gill body warranty



Natural gas conversion kit: 547548



## Ambassador Inbuilt

The Ambassador IB is a smaller version of its larger sibling. It boasts the same clean design offering a more compact alternative. Also constructed from premium 304 stainless steel with heavy duty main burners and a versatile rear burner.



552885

### Specifications

- 4 premium 304 stainless steel burners with stainless steel flame tamers improve heat distribution over full cooking surfaces.
- Infrared rear burner provides versatility
- Sleek premium stainless steel hood with a window, double lined to aid heat retention
- 50/50 vitreous cast iron hotplate and stainless steel grill
- Temperature gauge for controlled cooking
- Comes with UV resistant cover
- Roasting/warming rack provides additional room for cooking or keeping cooked food warm.
- Rear infrared burner perfect for radiant rotisserie cooking
- Natural gas conversion available
- Reliable integrated ignition.
- Stainless steel grill body is easy to clean and maintain
- Rotisserie kit included
- 10 year gill body warranty



Natural gas conversion kit: 547548



Super Grande® RBW Inbuilt 210

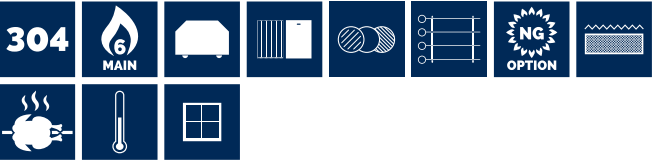
The Super Grande offers an inbuilt alternative to our stylish '210' entertainment range of barbecues. A good looking 6 burner barbecue with a generous cooking surface and packed with useful accessories.



552720

Specifications

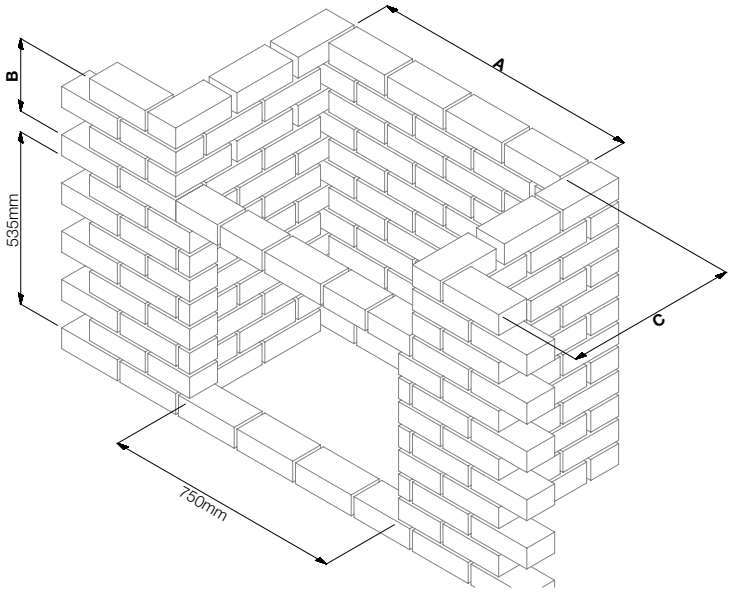
- 304 stainless steel
- 6 premium 304 stainless steel burners with stainless steel flame tamers improve heat distribution over full cooking surfaces
- Double lined roasting hood with large viewing window
- Functional interchangeable insert cooking system included
- Stainless steel kebab racks and skewers included
- Rear infrared burner perfect for radiant rotisserie cooking
- Rotisserie kit and UV cover included
- Zinc alloy control knobs
- Roasting/warming rack provides additional room for cooking or keeping cooked food warm
- High gloss vitreous enamel coated cookware is rust resistant and easy to clean
- Large W 480mm x D 400mm cast iron deep dish included
- 5 Year vitreous enamel grill body warranty



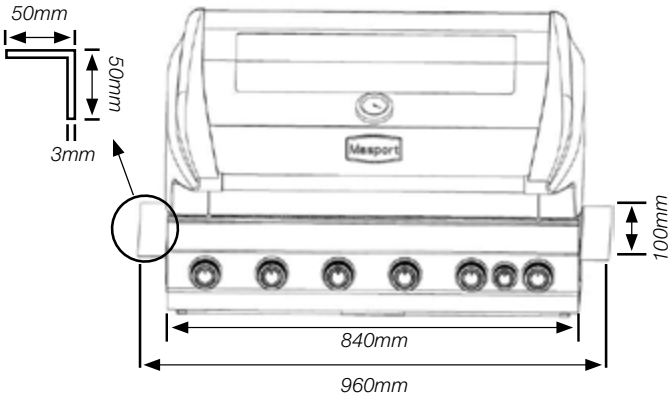
Natural gas conversion kit: 548979



Inbuilt Installation Information



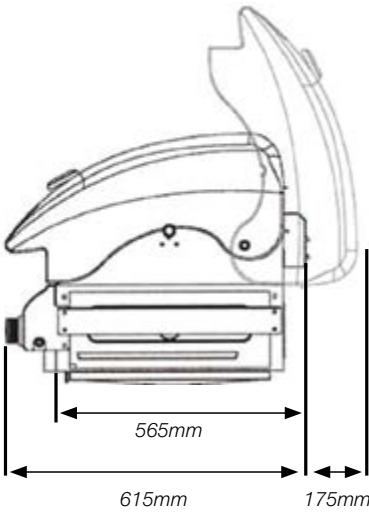
Super Grande Inbuilt 210 Dimensions



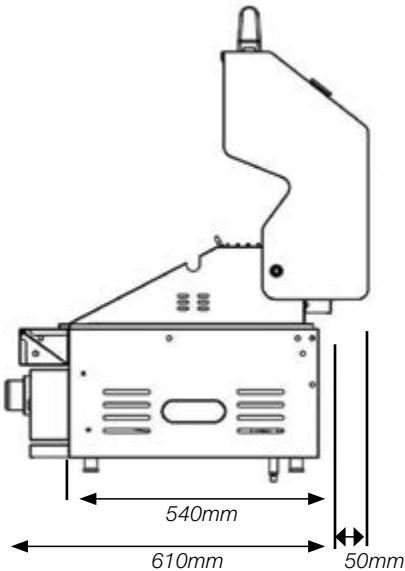
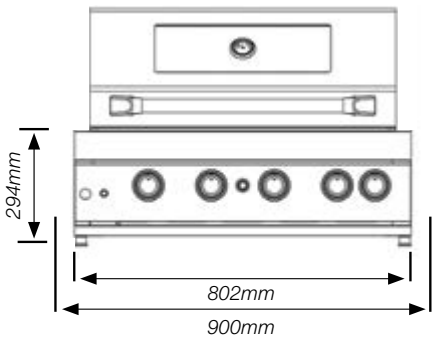
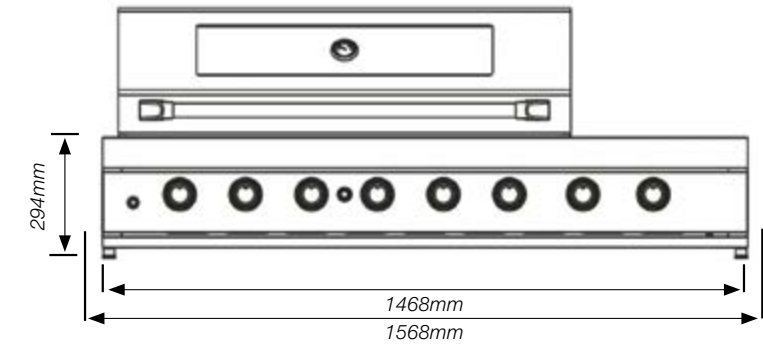
Standard layout dimensions

For Inbuilt Installations:  
Islands, masonry and other non-combustible material structures

Min clearance to non combustible materials		Ambassador Deluxe IB	Ambassador IB	Super Grande RBW Inbuilt 210
Width	A	1568mm	900mm	870mm
Height	B	294mm	294mm	225mm
Depth	C	540mm	540mm	540mm
Min clearance to combustible materials		450mm	450mm	450mm



Ambassador Deluxe IB & Ambassador IB Dimensions





# Portable Series

This go anywhere portable barbecue is finished in high grade 304 stainless steel. Durable enough to go to the beach or on the boat, this portable barbecue will go wherever you want to take it and it will reward you with a masterful cooking performance. Whether at home or away and you want a more permanent spot for the portable barbecue, the Westhaven stand and bracket system is the perfect solution. The platform hinges on the bracket system very easily and can be left installed or removed for quick storage. This is a simple but effective way to get more out of your portable barbecue.



## Westhaven High Hood

*This go anywhere portable barbecue is finished in high grade 304 Stainless Steel. Durable enough to go to the beach or on the boat, this portable barbecue will go wherever you want to take it and reward you with a masterful cooking performance. When at home or away and you want a more permanent spot for the portable barbecue, the Westhaven stand and bracket system is the perfect solution. The platform hinges on the bracket system very easily and can be left installed or removed for quick storage. This is a simple but effective way to get more out of your portable barbecue.*



552951

### Specifications

- Full high grade 304 stainless steel portable barbecue.
- Double lined high hood design allows more cooking space.
- Reliable integrated ignition.
- Temperature gauge for controlled cooking.
- 50/50 enamel cast iron grill/hotplate combo.
- Large stainless steel 'U' burner keeps the barbecue very hot.
- Gas Canister regulator option included.
- Fold out legs offer improved stability and can be compacted for transportation and easy storage.
- Stainless steel lock down latch and lockable slide out drip tray.
- 10 Year construction warranty.



## Wall Mount Bracket

*The Wall Mount Bracket provides the perfect solution when at home or away if a more permanent spot is required for the portable barbecue.*



\*Barbecue sold separately

### Specifications

- Manufactured from high quality 304 stainless steel and designed to fit most Masport stainless steel portable barbecues.
- Two part system allowing easy removal of base for storage or other uses.
- Base dimensions W510mm x D380mm.
- \* Barbecue sold separately



548598



# Pizza Oven & Outdoor Heating

There is something about cooking outside that brings out the chef in all of us. Extend your cooking options with an efficient gas fired Pizza and Outdoor oven. Add a touch of elegance and ambience to your outdoor entertaining with a Masport patio heater. Patio Heaters take the chill off in the evening and become quite the social magnet when entertaining outdoors.



## Grande Pizza Oven

*Crafted from high-grade 304 stainless steel for lifelong durability and finish. Gas operated so there's no need to prepare a fire! Complete with a full size cabinet, temperature gauge, large pizza stone, smoker box and pizza peel*



552948

### Specifications

- Stainless steel burner - faster to heat up and easier to maintain temperature
- Premium 304 stainless steel construction
- Reliable integrated ignition
- Temperature gauge for controlled cooking
- Oven stacker rack
- Smoker box included to create extra flavour
- Two large square pizza stones included
- Pizza peel included
- Castor wheels to move around
- Cabinet for storage



## Side Burner Pizza Oven

*Now you can enjoy fresh gourmet pizza in minutes with the Masport side burner pizza oven. Designed to fit most BBQ side burners, this portable stainless steel pizza oven comes complete with a round pizza stone, temperature gauge and a tempered glass door which allows for easy monitoring of your cooking.*



552947

### Specifications

- Durable stainless steel construction
- Designed to fit most BBQ side burners
- Tempered Glass doors allows for easy monitoring of your cooking
- 260mm round pizza stone
- Insulated double lined oven provides even heat distribution
- Temperature gauge for controlled cooking
- Carry handle for easy handling
- Pre-assembled ready to use
- Easy to fit, remove and store in BBQ cabinet





## Stainless Steel Patio Heater

Masport Outdoor Patio Heaters take the chill off in the evening and become quite the social magnet when entertaining outdoors. Good quality heaters with a reliable light up ignition starter.



552653

### Specifications

- Stainless steel burner and emitter surround provides more protection against corrosion than similar looking chrome and steel finishes
- Anti-tilt switch shuts off gas supply if appliance is tipped or falls over
- Piezo electric ignition
- Flame failure protection is a safety feature that turns the gas supply off if the flame goes out
- Hinged door provides easy access to the gas cylinder avoiding awkward bottle replacement
- Stainless steel table top provides a useful area for placing drinks and food when entertaining
- Pole and housing finished in stainless steel
- Majority 202 stainless steel
- Heater base is finished in durable powdercoat that protects the steel from the gas cylinders scratching and scuffing action
- Wheels for easy transportation

## Interchangeable Insert Cooking System

547137

- Set contains pizza stone, grill & hotplate inserts, grill insert holder & insert removal tool and kebab racks
- W 385mm x L 480mm
- Fits selected barbecues



## Cast Iron Deep Dish

559672

- Solid cast iron dish with handles for easy removal and placement
- W 385mm x L 480mm
- Fits selected barbecues



## Deluxe 18 Piece Stainless Steel BBQ Set

547598

- Made from stainless steel
- Hard wearing aluminium carry case
- Set contains: knife, fork, tongs, spatula, basting brush, grill scraper/brush, 4 skewers and 8 corn cob holders
- Stainless steel hanging loops for convenient storage during cooking



## Barbecue Covers

- A range of sizes designed to fit your Masport barbecue



## Rotisserie Kit

- Shaft and prong forks, supplied complete with all mounting hardware
- A range of sizes designed to fit your Masport barbecue



## 304 Stainless Steel Burners

- Replacement stainless steel burners
- Sizes designed to fit your Masport barbecue



## Stainless Steel Flame Tamers

- Replacement stainless steel flame tamers
- Sizes designed to fit your Masport barbecue



## Soft grip BBQ control knobs 4 pack

- Replacement chrome soft grip control knobs
- Rubber thumb grip for greater control and comfort



\*Product images may vary depending on your barbecue model





Comparison Chart

KEY: SS = Stainless Steel | P/C = Powder Coat | V/E = Vitreous Enamel

Product ID	Product Name	BBQ Material - Cabinet	BBQ Material - Dashboard	BBQ Material - Doors	BBQ Material - End Caps	BBQ Material - Grill Body	BBQ Material - Hood	BBQ Material - Side Trays	Barbecue Burners
552933	Super Grande RBW SII	304 SS	304 SS	304 SS	Cast Aluminium	Black V/E	304 SS	304 SS	6 main burners with 1 side wok burner & 1 rear burner
552965	Supreme Plus RBW SII	P/C steel	304 SS	304 SS	Cast Aluminium	Black V/E	304 SS	P/C steel	6 main burners with 1 side burner & 1 rear burner
552972	Supreme W SII	P/C steel	304 SS	P/C steel	Cast Aluminium	Black V/E	V/E	P/C steel	6 main burners with a versatile side burner
552982	Elite W 210	P/C steel	304 SS	P/C steel	Cast Aluminium	Black V/E	V/E	P/C steel	4 main burners with a versatile side burner
553051	Classic Four	P/C steel	430 SS	P/C steel	Cast Aluminium	Black V/E	V/E	P/C steel	4 main burners with a versatile side burner
552924	S/S 4	304 SS	304 SS	304 SS	Cast Aluminium	Black V/E	304 SS	304 SS	4 main burners with a versatile side burner
552975	MB4000 Red	P/C steel	430 SS	P/C steel	Cast Aluminium	Black V/E	P/C	P/C steel	4 main burners with a V/Ersatile side burner
552973	MB6000 Red	P/C steel	430 SS	P/C steel	Cast Aluminium	Black V/E	P/C	P/C steel	6 main burners with 1 side burner & 1 rear burner
553100	Tasman 6	P/C steel	P/C steel	P/C steel	Pressed steel	Black V/E	P/C	P/C steel	6 main burners with a versatile side burner
553103	Ambassador Kitchen Stone Top	304 SS	304 SS	304 SS	304 SS	304 SS	304 SS	304 SS (foldable)	6 main burners with 1 side wok burner & 1 rear burner
553050	Ambassador Kitchen Stone Top	304 SS	304 SS	304 SS	304 SS	304 SS	304 SS	304 SS (foldable)	6 main burners with 1 side wok burner & 1 rear burner
553102	Ambassador Kitchen	304 SS	304 SS	304 SS	304 SS	304 SS	304 SS	304 SS (foldable)	6 main burners with 1 side wok burner & 1 rear burner
552750	Ambassador Grill	304 SS	304 SS	304 SS	304 SS	304 SS	304 SS	304 SS (foldable)	6 main burners with 1 side wok burner & 1 rear burner
553101	Ambassador Grill	304 SS	304 SS	304 SS	304 SS	304 SS	304 SS	304 SS (foldable)	6 main burners with 1 side wok burner & 1 rear burner
552992	Ambassador Kitchen	304 SS	304 SS	304 SS	304 SS	304 SS	304 SS	304 SS (foldable)	6 main burners with 1 side wok burner & 1 rear burner

Side Burner	Main Burner MJ/h Spec	Side Burner MJ/h Spec	Rear Burner MJ/h Spec	Wok Burner MJ/h Spec	Total Input MJ/h Spec	BBQ Cooking Surface	Cooking Dimensions	Rotisserie	Temp Gauge	Warming Rack	Cover
Yes	6 x 11.7		1 x 12.7	1 x 10.99	93.9	50/50 V/E FADS hotplate and 3 piece FADS grill	800mm x 480mm	Yes	Yes	Yes	Yes
Yes	6 x 11.7	1 x 10.99	1 x 12.7		93.9	50/50 V/E FADS hotplate and 3 piece FADS grill	800mm x 480mm	Yes	Yes	Yes	Yes
Yes	6 x 11.7	1 x 10.99			81.2	50/50 V/E FADS hotplate and 3 piece FADS grill	800mm x 480mm		Yes	Yes	Yes
Yes	4 x 17.5	1 x 10.99			81.0	50/50 V/E FADS hotplate and 3 piece FADS grill	800mm x 480mm		Yes	Yes	Yes
Yes	4 x 11.5	1 x 10.8			56.8	50/50 vitreous cast iron hotplate and grill	700mm x 450mm		Yes	Yes	
Yes	4 x 11.5	1 x 10.8			56.8	50/50 vitreous cast iron hotplate and grill	700mm x 450mm		Yes	Yes	Yes
Yes	4 x 11.5	1 x 10.8			56.8	50/50 vitreous cast iron hotplate and grill	700mm x 450mm		Yes	Yes	
Yes	6 x 11.5	1 x 10.8	1 x 11.5		91.3	40/60 vitreous cast iron hotplate and grill	890mm x 450mm		Yes	Yes	Yes
Yes	6 x 12	1 x 11			83.0	50/50 vitreous cast iron hotplate and grill	800mm x 440mm		Yes	Yes	
Yes	6 x 13		1 x 12.5	1 x 12	102.5	30/70 vitreous cast iron hotplate and stainless steel grill	960mm x 460mm	Yes	Yes	Yes	Yes
Yes	6 x 13		1 x 12.5	1 x 12	102.5	30/70 vitreous cast iron hotplate and stainless steel grill	960mm x 460mm	Yes	Yes	Yes	Yes
Yes	6 x 13		1 x 12.5	1 x 12	102.5	30/70 vitreous cast iron hotplate and stainless steel grill	960mm x 460mm	Yes	Yes	Yes	Yes
Yes	6 x 13		1 x 12.5	1 x 12	102.5	30/70 vitreous cast iron hotplate and stainless steel grill	960mm x 460mm	Yes	Yes	Yes	Yes



Product ID	Product Name	BBQ Material - Cabinet	BBQ Material - Dashboard	BBQ Material - Doors	BBQ Material - End Caps	BBQ Material - Grill Body	BBQ Material - Hood	BBQ Material - Side Trays	Barbecue Burners
553042	Ambassador Twin Fridge Module Stone Top	304 SS and Stone							
552868	Ambassador Twin Fridge Module	304 SS							
553045	Ambassador Sink Module Stone Top	304 SS and Stone		304 SS					
552752	Ambassador Sink Module	304 SS		304 SS					
553040	Ambassador Storage Module Stone Top	304 SS and Stone		304 SS					
552962	Ambassador Storage Module	304 SS		304 SS					
553044	Ambassador Corner Module Stone Top	304 SS and Stone							
552753	Ambassador Corner Module	304 SS							
552928	Ambassador Deluxe Inbuilt		304 SS		304 SS	304 SS	304 SS		6 main burners with 1 side wok burner & 1 rear burner
552885	Ambassador Inbuilt		304 SS		304 SS	304 SS	304 SS		4 main burners with an infrared rear burner
552720	Super Grande® RBW Inbuilt 210		304 SS		Cast Aluminium	Black V/E	304 SS		6 main burners with an infrared rear burner
552951	Westhaven High Hood		304 SS		304 SS	304 SS	304 SS		Stainless steel 'U' burner
552948	Grande Pizza Oven								
552947	Side Burner Pizza Oven			Tempered Glass			430 SS		
552653	Stainless Steel Patio Heater								

Side Burner	Main Burner MJ/h Spec	Side Burner MJ/h Spec	Rear Burner MJ/h Spec	Wok Burner MJ/h Spec	Total Input MJ/h Spec		BBQ Cooking Surface		Cooking Dimensions	Rotisserie	Temp Gauge	Warming Rack	Cover
Yes	6 x 13		1 x 12.5	1 x 12	102.5		30/70 vitreous cast iron hotplate and stainless steel grill		960mm x 460mm	Yes	Yes	Yes	Yes
	4 x 13		1 x 11		63.0		50/50 vitreous cast iron hotplate and stainless steel grill		660mm x 460mm	Yes	Yes	Yes	Yes
	6 x 11.7		1 x 12.7		82.9		50/50 V/E hotplate and interchangeable cooking grill		800mm x 480mm	Yes	Yes	Yes	Yes
	1 x 10.7				10.7		50/50 solid cast iron hotplate and grill with optional stainless steel plate available		470mm x 280mm		Yes		
	1 x 15.5				1 x 15.5								Yes
									260mm round pizza stone				





follow us for exclusive updates



**Warranty and Disclaimer Info:**

All Masport products carry a manufacturer's warranty. Please refer to your warranty card supplied with each product for details and conditions for specific models. This brochure supersedes all previous Masport Barbecue Range brochures. Product specification, colours and prices are subject to change without prior notification. All models may not be stocked at all stores. Whilst care has been taken in the preparation of this document, Masport is constantly improving and updating its product range, therefore model specifications may vary and should be checked at time of purchase.

**Masport Australia Pty Limited**

PO Box 533, Braeside, Victoria 3195, Australia

P: 1300 366 225 | F: 1800 035 594

E: [sales@masport.com.au](mailto:sales@masport.com.au)

W: [www.masport.com.au](http://www.masport.com.au)

**Available From:**

---